



**DREAM YACHT**  
WORLDWIDE

# Base Guide

EVERYTHING YOU NEED TO KNOW TO ENJOY YOUR NEXT DREAM DESTINATION



THE PACIFIC | TAHITI, RANGIROA, POLYNESIA  
EASY CREWED

## BOARDING PLACE

---

Public Pier of Ohotu,

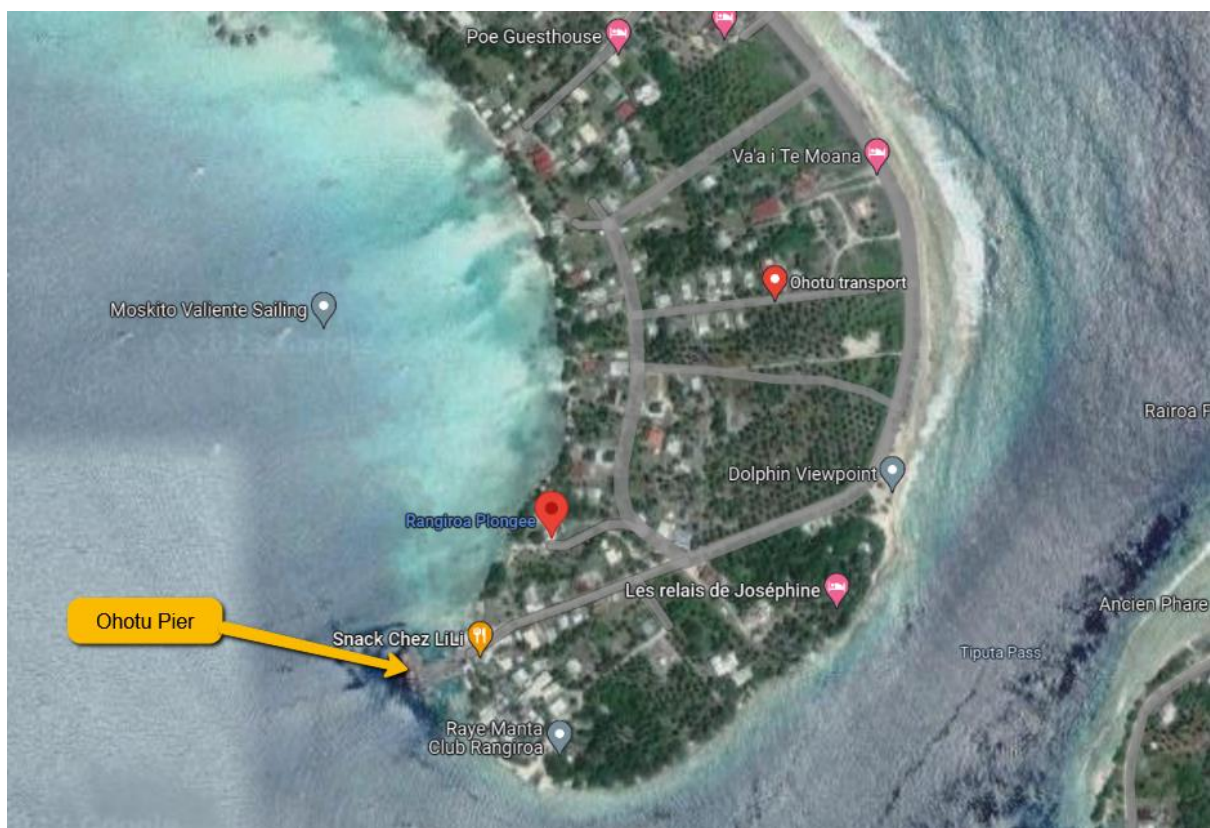
Tiputa pass

(near Rangiroa diving center)

GPS POSITION: 14° 58' 18.4548" S 147° 38' 2.04" W

## MAP OF THE BOARDING PLACE

---



## BOARDING

---

### EMBARKATION TIME

Embarkation is at 3pm local time.

### DISEMBARKATION TIME

Disembarkation takes place at 8am

*Some hotels in Rangiroa offer day passes. For a fee, this service allows passengers arriving very early in Rangiroa (boarding at 3pm) and those with a late domestic flight (disembarking at 8am) to use the hotels' facilities. For further information, contact your agency & customer service*

## BASE CONTACTS

---

If you need support while on your charter, contact the base immediately using the contact details in this guide. Please note DYC has no base located in Rangiroa, only in Raiatea. Please contact quite in advance your booking agent for all requests prior to your charter.

### BASE MANAGER & SERVICE CLIENT :

Laetitia Mahé

Téléphone : +689 87 22 83 34

Olivier Naslain

Téléphone : +689 87 233 150

## YOUR EASY CREWED CHARTER

---

To ensure your private Easy Crewed charter experience is perfectly tailored to your preferences, we kindly ask you to complete the following items on a form that will be sent to you separately:

- **Culinary Preferences:** Let us know your favorite dishes, dietary restrictions, and any dislikes so our cook can plan meals exactly to your taste.
- **Travel Preferences:** Whether you prefer relaxing in quiet bays, exploring onshore, or seeking special highlights – your input will help our skipper to create a personalized itinerary just for you.
- **Alcohol Order:** You have the option to provision your alcohol order with us (minimum 3 weeks before boarding date) as only soft drinks are included

### INCLUSIONS & EXCLUSIONS

The rates include:

- First & last night at the Dream Yacht base
- The boat and its equipment, dinghy, and outboard engine
- Service of the crew (skipper, hostess/cook)
- Full board is standard on Easy Crewed Charters in Rangiroa/Polynesia: breakfast, lunch, snack and dinner including soft drinks
- Linen: 1 set of linen / cabin / charter (1 set = 2 sheets / 2 pillow cases / 1 blanket),  
Towels: 1 set of towels / pax / charter (1 set = 1 face towel / 1 bath towel / 1 beach towel)  
which is 2 sets per week per cabin per person
- Consumables for the yacht (diesel, fuel, gas and water)

- Water sports on board: snorkeling gear & 2 kayaks and 2 paddleboards
- End cleaning
- Harbour and mooring fees

The rates do not include:

- Cruising and tourist taxes, clearance and custom fees, island fees if there are any
- Cancellation insurance and private insurance
- Alcoholic drinks (possible to order separately minimum 3 weeks before boarding date) and special meal requests
- Personal expenses and excursions with local providers
- Crew gratuity
- On catamarans 54 ft and larger: shower gel & shampoo
- And more generally that is not explicitly stated

## HOW TO GET THERE?

---

### ACCESS BY PLANE

Faa'a International Airport, also known as Tahiti International Airport (PPT): All international flights arrive in Papeete and there are some connecting flights every day to the islands. The simplest way to reach Rangiroa (RGI) is by direct flight from Papeete with Air Tahiti and Air Moana. Please check the schedule on the [airport website](#).

### TRANSFERS FROM THE AIRPORT TO OHOTU PIER

Rangiroa airport is located on the main island of Avatoru, close to the village and most of the hotels and family-run guest houses.

There is no shuttle service, so to get from the airport to the main village you will need a car. The journey takes approximately 10 minutes. Due to the limited number of taxis available, we strongly recommend that you book your transfers with us.

*We provide transfers between the airport and your catamaran (Ohotu Pier), as well as the transfers between the hotels of Rangiroa to the Ohotu Pier. No transfer provided from/to accommodation type airbnb!*

### ACCESS BY ROAD

There are a handful of car rental operators on Rangiroa with offices at the airport, but rates can be steep. The resorts offer rentals on an hourly basis, which can be a better value. One hour is more

than enough time to slowly drive to each end of Avatoru. Head east for 4,1km and continue straight (7 minutes drive). Your destination will be on the left.

### **CAR RENTALS:**

#### **ARENAHIO LOCATION**

Avatoru

B.P. 39 – 98775 Avatoru – Rangiroa

Tel.: (689) 40.96.82.45

GSM: (689) 87.73.92.84

[pomelarangiroa@yahoo.fr](mailto:pomelarangiroa@yahoo.fr)

#### **RANGI RENT A CAR**

Avatoru

B.P. 143 – 98775 Avatoru – Rangiroa

Tel.: (689) 40.96.03.28

GSM: (689) 87.21.35.08

[rangi.rentacar@laposte.net](mailto:rangi.rentacar@laposte.net)

## **USEFUL INFORMATION**

---

It is essential that each passenger must have a passport valid for 6 months after the return date. A copy of your passports, of your flight details and any know food restrictions or medical diet must be sent at least 2 weeks before your departure to your cruise' organizer.

### **PAYMENT**

Accepted:  Visa  MasterCard  Amex  Cash

**CURRENCY:** Pacific franc (CFP) & Euro (EUR) & American dollar (USD)

**VOLTAGE:** 220V

**DIALING CODE:** +689

### **INTERNET**

Internet and cell phones work in the village and the main island but not in the huge part of the atoll of Rangiroa. Wi-fi is available with a purchase of drink/lunch in Snack Lili located on the pier Ohutu.

We recommend you rent a Mobile Hotspot from **TAHITI WIFI** available only at Papeete Airport .

#### **HOTEL SUGGESTIONS:**

- **Les Relais de Josephine**
- **Hotel Kia Ora**
- **Hotel Maitai**

#### **RESTAURANT SUGGESTIONS:**

- **Chez Lili**
- **Cafe Obelix**
- **Snack Puna**

*Banks, doctor, ATM, pharmacy and the post office are available at the main village of Avatoru (12 km from the boarding quay).*

#### **ENVIRONMENT**

- Respect your surroundings and leave only footprints in the sand
- Respect regulations around marine reserves and private islands

## **AREA GUIDE**

---

#### **LOCAL AREA INTRODUCTION**

Larger than the island of Tahiti, Rangiroa's turquoise lagoon has been called "God's Aquarium" by divers and snorkelers from around the world. Rangiroa is one of the largest coral atolls in the world. Atolls are remains of volcanic islands that have sunk back into the ocean under their own weight after millions of years, leaving behind only the reef. Inside the ring of the atoll, the ocean transforms into a placid lagoon with clear waters that are a haven for marine life.

#### **WEATHER**

The Islands of Tahiti enjoy a tropical climate that's perfect year-round for a getaway. In fact, the Tuamotu Islands bask in almost 3,000 hours of sunshine per year, one of the highest in the world! The temperatures in French Polynesia are mild and relatively constant, and the islands are cooled by the trade winds of the Pacific that blow throughout the year. On the northern islands, the average ambient temperature is around 78°F/25°C and is the same as the tranquil waters of the nation's turquoise lagoons. While farther away from the equator, the archipelagos down south (the Austral Islands and the Gambier Islands) enjoy cooler weather.

At the Polynesian latitudes, it's summer year-round! However, you can distinguish two main Tahitian weather patterns: the dry season and the humid season. The dry season lasts from May to October and has balmy temperatures between 71°F and 80°F/21°C and 27°C. While the humid season typically lasts

from November to April, is a little warmer (between 77°F and 95°F/25°C and 35°C), and subject to tropical showers, which rarely last longer than 30 minutes.

However, no matter what time of year you plan to visit, you'll experience the warm beach days and mild, fragrant nights The Islands of Tahiti are famous for. Although the temperature may sometimes appear high, the trade winds from the Pacific blow all the time and refresh the air of the islands beautifully.

## TEMPERATURE

Climate in Tahiti:

- Summer high: The February high is around 87°/31 °C
- Winter low: The July low is 69°/21 °C

## WHAT TO PACK

---

- Soft luggage that you can fold away or roll up - hard suitcases are hard to fit in your cabin and there is nowhere to store them onboard
- Reef-friendly sunblock and sun cream
- Dry bags or zip lock bags to protect your money, cameras and mobiles
- Seasickness bands and tablets are good for novice sailors
- Earplugs and eyeshades are great for light sleepers
- Keep clothing light and remember you will be around water a lot! Don't forget several swimsuits, hat, sunglasses and an extra beach towel (even though towels are provided)
- When it comes to shoes, you're likely to be barefoot onboard so pack just one pair for going ashore and some water shoes for reefs
- Leave expensive jewellery, make-up and hair straighteners behind – it's time to relax!

*Information subject to change without notice.*