



**DREAM YACHT**  
WORLDWIDE

# Base Guide

EVERYTHING YOU NEED TO KNOW TO ENJOY YOUR NEXT DREAM DESTINATION



THE PACIFIC | POLYNESIA RANGIROA, CABIN

## BASE ADDRESS

---

By the cabin charter BOARDING & DISEMBARKATION:

Public Pier of Ohutu,

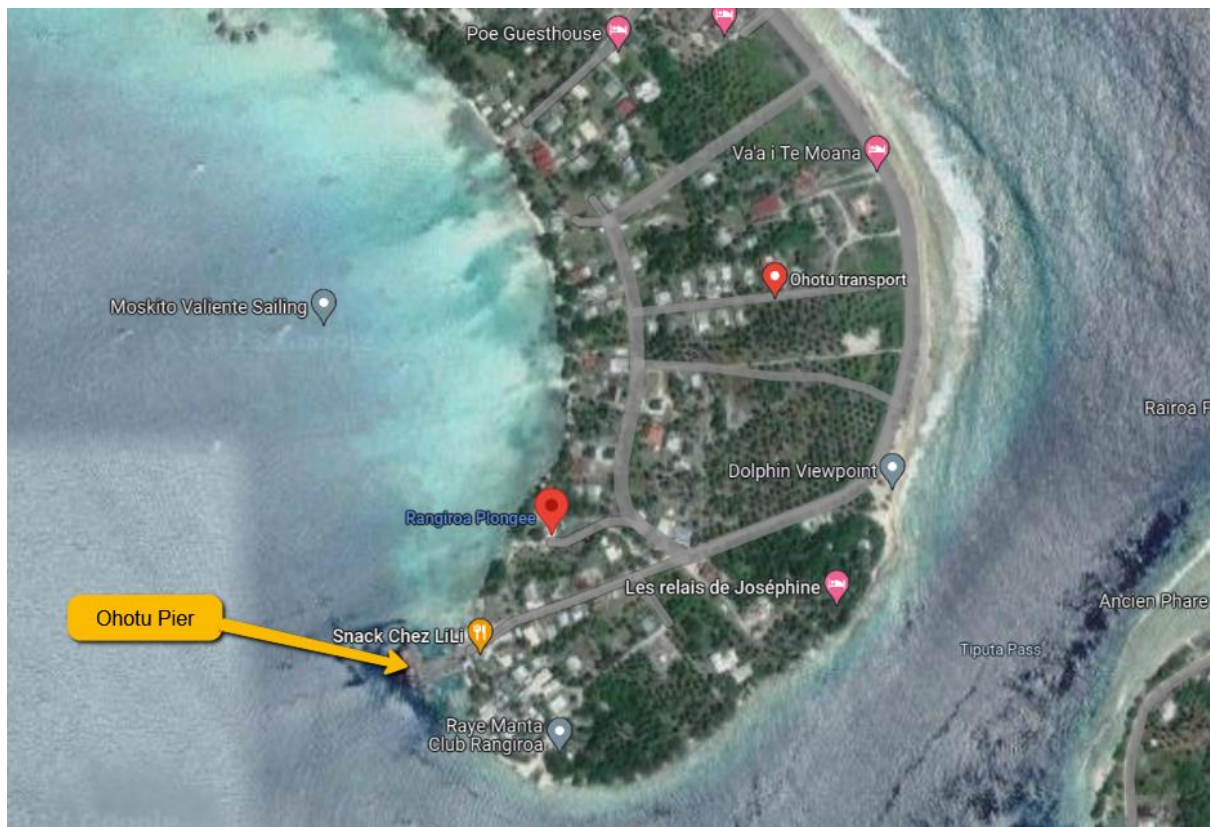
Tiputa pass

(near Rangiroa diving center)

GPS POSITION: 14° 58' 18.4548" S 147° 38' 2.04" W

## MAP OF THE BOARDING PLACE

---



## BASE CONTACTS

---

If you need support while on your charter, contact the base immediately using the contact details in this guide. Please contact your booking agent for all requests prior to your charter.

### **BASE MANAGER & CUSTOMER SERVICE MANAGER:**

Marie-Clémence BESSE

Phone: +689 87 228 334

## CHECK IN & CHECK OUT DETAILS

---

**Embarkation:** at noon

**Disembarkation:** at 08.00h

*\* starting from April 2024 embarkation time is set to 3pm for all the French Polynesia cruises*

## HOW TO GET THERE?

---

### **ACCESS BY PLANE**

The most popular airlines for this route are Air France, easyJet, United Airlines, Lufthansa, and Delta Air Lines. Paris and Tahiti have 315 direct flights per week.

The **Tahiti-Faa'a International Airport** is located on Tahiti's main island and is about 5 km west of Papeete. This is the only international airport in French Polynesia and is close and convenient to all the major hotels. The simplest way to reach Rangiroa is by direct flight from Papeete.

Please check the schedule on the [airport website](#).

### **TRANSFERS FROM THE AIRPORT TO OHOTU PIER**

Rangiroa airport is located on the main island of Avatoru, close to the village and most of the hotels and family-run guest houses.

There is no shuttle service, so to get from the airport to the main village you will need a car. The journey takes approximately 10 minutes.

As there are few taxis on this atoll, we strongly suggest to take the transfer package.

*We provide transfers between the airport and your catamaran (Ohotu Pier), as well as the transfers between the hotels of Rangiroa to the Ohotu Pier.*

## ACCESS BY ROAD

There are a handful of car rental operators on Rangiroa with offices at the airport, but rates can be steep. The resorts offer rentals on an hourly basis, which can be a better value. An hour is more than enough time to slowly drive to each end of Avatoru.

Head east for 4,1km and continue straight (7 minutes drive). Your destination will be on the left.

## CAR RENTALS:

### ARENAHIO LOCATION

Avatoru  
B.P. 39 – 98775 Avatoru – Rangiroa  
Tel.: (689) 40.96.82.45  
GSM: (689) 87.73.92.84  
[pomelarangiroa@yahoo.fr](mailto:pomelarangiroa@yahoo.fr)

### RANGI RENT A CAR

Avatoru  
B.P. 143 – 98775 Avatoru – Rangiroa  
Tel.: (689) 40.96.03.28  
GSM: (689) 87.21.35.08  
[rangi.rentacar@laposte.net](mailto:rangi.rentacar@laposte.net)

Information subject to change without notice.

## USEFUL INFORMATION

---

### PAYMENT

The onboard payment possible with:  Visa  MasterCard  Amex  Cash

### HOTEL SUGGESTIONS:

- [Les Relais de Josephine](#)
- [Hotel Kia Ora](#)
- [Hotel Maitai](#)

### RESTAURANT SUGGESTIONS:

- [Chez Lili](#)
- [Cafe Obelix](#)
- [Snack Puna](#)

Banks, doctor, ATM, pharmacy and the post office are available at the main village of Avatoru (12 km from the boarding quay).

## AREA GUIDE

---

### LOCAL AREA INTRODUCTION

Larger than the island of Tahiti, Rangiroa's turquoise lagoon has been called "God's Aquarium" by divers and snorkelers from around the world. Rangiroa is one of the largest coral atolls in the world. Atolls are remains of volcanic islands that have sunk back into the ocean under their own weight after millions of years, leaving behind only the reef. Inside the ring of the atoll, the ocean transforms into a placid lagoon with clear waters that are a haven for marine life.

**CURRENCY:** Pacific franc (CFP)

**VOLTAGE:** 220V

**DIALING CODE:** +689

### INTERNET

Internet and cell phones work in the village and the main island but not in the huge part of the atoll of Rangiroa. Wi-fi is available with a purchase of drink/lunch in Snack Lili located on the pier Ohutu,

We recommend you rent a Mobile Hotspot from **TAHITI WIFI** available only at Papeete Airport .

### ENVIRONMENT

- Respect your surroundings and leave only footprints in the sand
- Only use the engine or genset when needed (fill up your tanks for the water maker at the docks when you can)
- Recycle your garbage in the correct containers at the marina
- Respect regulations around marine reserves and private islands where disembarking is not permitted

### WEATHER

The Islands of Tahiti enjoy a tropical climate that's perfect year-round for a getaway. In fact, the Tuamotu Islands bask in almost 3,000 hours of sunshine per year, one of the highest in the world! The temperatures in French Polynesia are mild and relatively constant, and the islands are cooled by the trade winds of the Pacific that blow throughout the year. On the northern islands, the average ambient temperature is around 78°F/25°C and is the same as the tranquil waters of the nation's turquoise lagoons. While farther away from the equator, the archipelagos down south (the Austral Islands and the Gambier Islands) enjoy cooler weather.

At the Polynesian latitudes, it's summer year-round! However, you can distinguish two main Tahitian weather patterns: the dry season and the humid season. The dry season lasts from May to

October and has balmy temperatures between 71°F and 80°F/21°C and 27°C. While the humid season typically lasts from November to April, is a little warmer (between 77°F and 95°F/25°C and 35°C), and subject to tropical showers, which rarely last longer than 30 minutes.

However, no matter what time of year you plan to visit, you'll experience the warm beach days and mild, fragrant nights The Islands of Tahiti are famous for. Although the temperature may sometimes appear high, the trade winds from the Pacific blow all the time and refresh the air of the islands beautifully.

## TEMPERATURE

Climate in Tahiti:

- Summer high: The February high is around 87°/31 °C
- Winter low: The July low is 69°/21 °C

## WHAT TO PACK

---

- Soft luggage that you can fold away or roll up - hard suitcases are hard to fit in your cabin and there is nowhere to store them onboard
- Reef-friendly sunblock and sun cream
- Dry bags or zip lock bags to protect your money, cameras and mobiles
- Seasickness bands and tablets are good for novice sailors
- Earplugs and eyeshades are great for light sleepers
- Keep clothing light and remember you will be around water a lot! Don't forget several swimsuits, hat, sunglasses and an extra beach towel (even though towels are provided)
- When it comes to shoes, you're likely to be barefoot onboard so pack just one pair for going ashore and some water shoes for reefs
- Leave expensive jewelry, make-up and hair straighteners behind – it's time to relax!