



**DREAM YACHT
WORLDWIDE**

Base Guide

EVERYTHING YOU NEED TO KNOW TO ENJOY YOUR NEXT DREAM DESTINATION



THE PACIFIC | RAIATEA (POLYNESIA), CABIN

BOARDING & DISEMBARKATION

By the cabin charter BOARDING & DISEMBARKATION:

Bora Bora Dream Premium (7 nights): this cruise starts & ends in Raiatea island - Public Pier downtown of Uturoa (in front of the Shell gas station)

Polynesia Dream Premium (10 nights): this cruise goes from Raiatea island (same info as Bora Bora Dream above) to Tahiti island – Marina Taina, or vice versa. The order (start in Raiatea or Tahiti) is clearly indicated on the booking confirmation

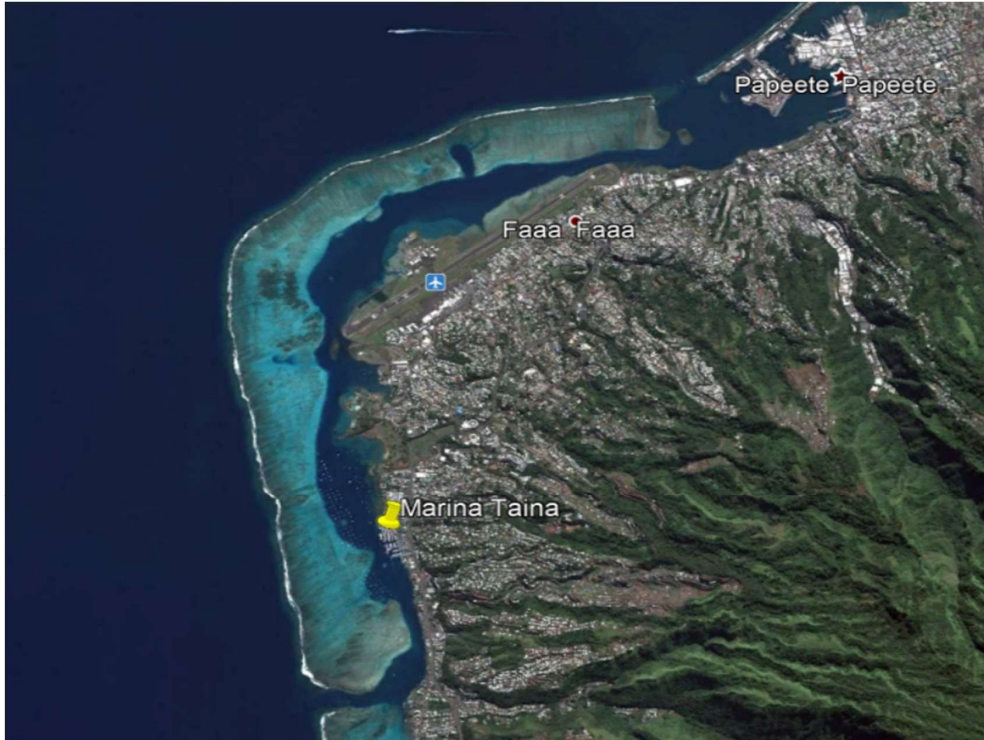
Bora Bora Pearl Dream Premium (4 nights): this cruise starts in Raiatea island (same info as above) & ends in Bora Bora - Quai de Vaitape

MAPS OF THE BOARDING PLACE

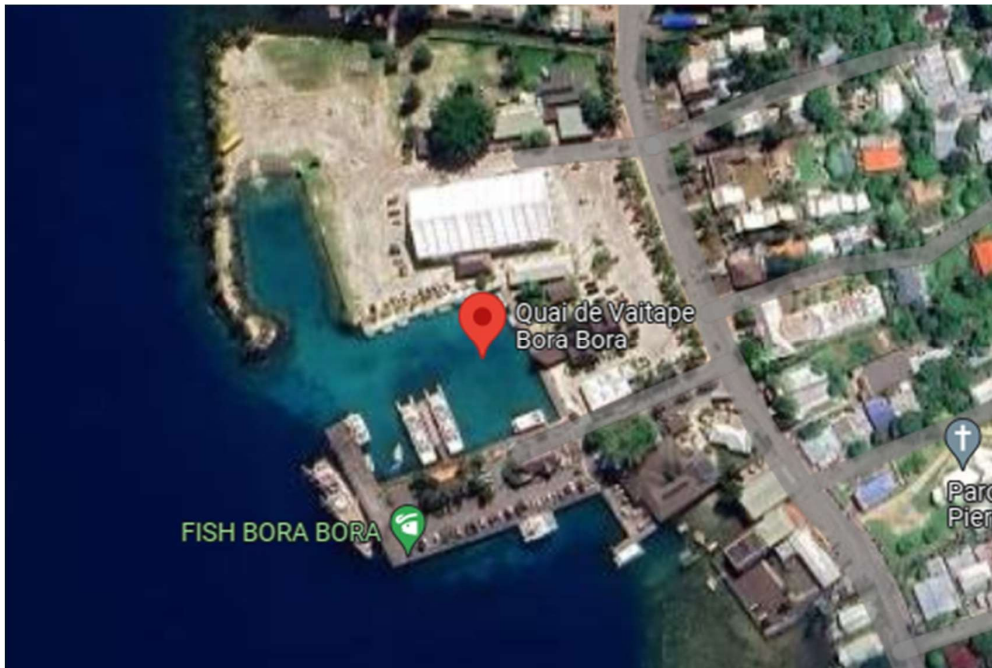
PUBLIC PIER UTUROA, RAIATEA:



MARINA TAINA, TAHITI:



QUAI DE VAITAPE, BORA BORA





BASE CONTACTS

If you need support while on your charter, contact the base immediately using the contact details in this guide. Please contact your booking agent for all requests prior to your charter.

BASE MANAGER & CUSTOMER SERVICE MANAGER:

Laetitia Mahe

Phone: +689 87 228 334

CHECK IN & CHECK OUT DETAILS

Bora Bora Dream Premium cruise (7 nights)

Embarkation: at 3pm - Public Pier downtown of Uturoa, Raiatea island (in front of the Supermarket Champion)

Disembarkation: at 8am Public Pier downtown of Uturoa, Raiatea island (in front of the Supermarket Champion)

Polynesia Dream Premium cruise (10 nights):

This cruise is organized in one-way Raiatea to Tahiti or Tahiti to Raiatea depending on the starting date. The order of the cruise is clearly described on the booking confirmation.

Embarkation: at 3pm - Public Pier downtown of Uturoa, Raiatea island (in front of the Supermarket Champion) **OR** in Marina Taina, Tahiti.

Disembarkation: at 8am – Marina Taina, Tahiti **OR** Public Pier downtown of Uturoa, Raiatea island (in front of the Supermarket Champion)

Bora Bora Pearl Dream Premium cruise (4 nights):

Embarkation: at 3pm - Public Pier downtown of Uturoa, Raiatea island (in front of the Supermarket Champion)

Disembarkation: at 8am Vaitape Quay, Bora Bora (next to Air Tahiti navette shuttle to the airport)

Our base is situated on Raiatea island.

If you are starting from Marina Taina on Tahiti Island, the exact berth of our boat will only be determined by the marina office on **the day of embarkation**. Therefore, we highly recommend **arranging a transfer through us** (refer to the section below for details), as the taxi driver will have the necessary information and will share it with you.



Otherwise, please contact DYW base staff after 9am on day of embarkation:

Marie-Clémence Besse on (+689) 87 22 83 34 or **François Guais** on (+689) 87 28 42 64.

***In case of early arrival, it's possible to leave luggage on board from 12pm, to enjoy the surroundings and come back at 3pm for embarkation time.*

HOW TO GET THERE?

ACCESS BY PLANE

Fa'a'a International Airport, also known as Tahiti International Airport (PPT): All international flights arrive in Papeete and there are some connecting flights every day to the islands, including two or three per day for Raiatea.

Raiatea Airport (RFP): The airport is 4km from the boarding place, which is a 15-minute journey by car/shuttle. There are regular flights from Papeete with Air Tahiti.

TRANSFERS TO PUBLIC PIER UTUROA – RAIATEA ISLAND

If you need an organized transfer from the airport, please contact [your booking agent](#). We provide transfers as follows:

In Raiatea: between the airport of Raiatea and the catamaran as well as between the hotels of Raiatea (up to 10km from Uturoa) and the catamaran.

TRANSFERS TO MARINA TAINA – TAHITI ISLAND

If you need an organized transfer from the airport, please contact [your aftersales team or your booking agent](#). We provide transfers as follows:

In Tahiti: between the airport of Tahiti and marina Taina as well as between hotels (up to 10km from Marina Taina) to Marina Taina (*transfers possible between **PK 7 East Coast and **PK 10 West Coast (International hotels + Fare Suisse and Relais Fenua - ferry terminal - airport of Tahiti and Marina Taina)*)

Transfers **cannot** be arranged from [more distant AirBnB](#) rental locations. In such cases, we can organize a transfer from Tahiti airport at 2:30 PM to arrive at Marina Taina in time for embarkation.

***PK = point kilométrique / kilometer point*

TRANSFERS IN BORA BORA

In Bora Bora transfers cannot be organized by Dream Yacht Worldwide.



ACCESS BY ROAD

The boarding place is located close to town with groceries and shops around.

Information subject to change without notice.

USEFUL INFORMATION

PAYMENT for Beverages onboard

For beverages onboard payment possible with cash only: Visa MasterCard Amex Cash

****Alcoholic beverages (except the daily cocktail), fruit juices outside breakfast, and sodas must be purchased with **cash only**, paid directly to the crew*

PAYMENT for Excursions onboard

For excursions onboard payment possible with: Visa MasterCard Amex Cash

****Excursions added during the cruise can be paid by credit card Visa, MasterCard but not Amex*

HOTEL SUGGESTIONS:

- **Sunset Raiatea Hotel:** pk 5 Uturoa, Raiatea
- **Raiatea lodge:** BP 680, Uturoa, Raiatea
- **Villa Tonoï:** Uturoa, Raiatea
- **Villa Temehani:** Call: 689 40 66 12 88 or 87 77 54 87
- **Opoa Beach Hotel:** pk 37, Ōpoa 98735

RESTAURANT SUGGESTIONS:

- **Raiatea lodge**
- **Snack Tonoï:** Call: 40663256

Banks, doctor, hospital, ATM, pharmacy and the post office are available at the main village of Uturoa (0.5 km from the boarding quay).



YOUR CRUISE

We often propose excursion packages on cabin cruise, don't hesitate to speak to your sales advisor to book them in advance.

AREA GUIDE

LOCAL AREA INTRODUCTION

The South Pacific island of Tahiti and its neighbour islands in the French Polynesia may be the closest you will ever come to paradise on earth.

Tahiti, which sits within a cruising ground of five groups of islands, is bursting with exciting marine life, emerald volcanic peaks and vivid exotic flowers. Tahiti is part of the Society Islands, an archipelago made up of the Windward and the Leeward Islands. It's the perfect destination for a yacht charter.

This area boasts some of the most famous, spectacular landscapes in the world, including the idyllic Bora Bora for romantics, as well as Raiatea, Huahine, Taha'a and Moorea.

Cooled by the Pacific Ocean's trade winds, Tahiti enjoys a pleasant, sunny climate. It's volcanic landscape and warm tropical waters have created a diverse ecosystem of interesting plants and animals.

Whatever itinerary you choose, a Tahiti sailing vacation is unmatched for sheer beauty, sunny skies, wonderful beaches and friendly smiles.

CURRENCY: Pacific franc (CFP) & Euro (EUR) & American dollar (USD)

VOLTAGE: 220V

DIALING CODE: +689

INTERNET

The Internet is slow and expensive in the region. You can access Wi-Fi at our marina, at Uturoa market and in some restaurants. You can find internet cafes in and Papeete town.

We recommend you rent a Mobile Hotspot from **TAHITI WIFI** available only at Papeete Airport .

ENVIRONMENT

- Respect your surroundings and leave only footprints in the sand
- Respect regulations around marine reserves and private islands



WEATHER

The Islands of Tahiti enjoy a tropical climate that's perfect year-round for a getaway. In fact, the Tuamotu Islands bask in almost 3,000 hours of sunshine per year, one of the highest in the world! The temperatures in French Polynesia are mild and relatively constant, and the islands are cooled by the trade winds of the Pacific that blow throughout the year. On the northern islands, the average ambient temperature is around 78°F/25°C and is the same as the tranquil waters of the nation's turquoise lagoons. While farther away from the equator, the archipelagos down south (the Austral Islands and the Gambier Islands) enjoy cooler weather.

At the Polynesian latitudes, it's summer year-round! However, you can distinguish two main Tahitian weather patterns: the dry season and the humid season. The dry season lasts from May to October and has balmy temperatures between 71°F and 80°F/21°C and 27°C. While the humid season typically lasts from November to April, is a little warmer (between 77°F and 95°F/25°C and 35°C), and subject to tropical showers, which rarely last longer than 30 minutes.

However, no matter what time of year you plan to visit, you'll experience the warm beach days and mild, fragrant nights The Islands of Tahiti are famous for. Although the temperature may sometimes appear high, the trade winds from the Pacific blow all the time and refresh the air of the islands beautifully.

TEMPERATURE

Climate in Tahiti:

- Summer high: The February high is around 87°/31 °C
- Winter low: The July low is 69°/21 °C

WHAT TO PACK

- Soft luggage that you can fold away or roll up - hard suitcases are hard to fit in your cabin and there is nowhere to store them onboard
- Reef-friendly sunblock and sun cream
- Dry bags or zip lock bags to protect your money, cameras and mobiles
- Seasickness bands and tablets are good for novice sailors
- Earplugs and eyeshades are great for light sleepers



DREAM YACHT WORLDWIDE

- Keep clothing light and remember you will be around water a lot! Don't forget several swimsuits, hat, sunglasses and an extra beach towel (even though towels are provided)
- When it comes to shoes, you're likely to be barefoot onboard so pack just one pair for going ashore and some water shoes for reefs
- Leave expensive jewellery, make-up and hair straighteners behind – it's time to relax!